

# CROP MANAGEMENT REPORT

October 2, 2020

Volume 7, Issue 15

If you would like to be added to  
our newsletter mailing list please  
email  
[erica.rauschuber@ag.tamu.edu](mailto:erica.rauschuber@ag.tamu.edu)  
THANK YOU

Glasscock County Surplus  
Sale—October 17

Halloween Carnival—  
October 31, Garden City  
Community Center

ST. LAWRENCE PEST MANAGEMENT  
BRAD EASTERLING  
EA-IPM

GLASSCOCK, REAGAN, UPTON COUNTIES  
PO Box 299

GARDEN CITY, TX 79739  
432-354-2381 (o)  
940-256-1524 (m)

[HTTPS://GLASSCOCK.AGRILIFE.ORG/  
IPM/](https://glasscock.agrilife.org/ipm/)

[HTTPS://WWW.FACEBOOK.COM/  
STLAWRENCEIPM/](https://www.facebook.com/stlawrenceipm/)



## COTTON

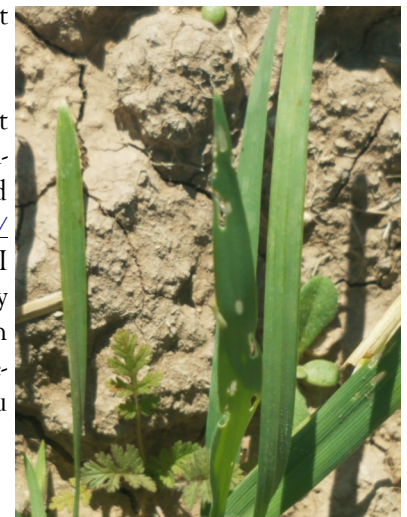
Well harvest has officially kicked off with a handful of folks on strippers and a lot more fields that have been sprayed. Unfortunately, yields are not what are needed this year and in some cases even less than what was expected. Most all of the dry land that managed to come up this year is now being shredded with just a very small amount that will be stripped. The Upton county area looks real rough having received even less rain that direction than farther East. I don't believe there is a single acre of dryland over there.

I put out a defoliation trial Wednesday (9-30) at Allen Jansa's next to his house on Hwy 137 across from Rolland Halfmann. There are 12 treatments with Ginstar, Folex, gramoxone, and several PPO's, most all with ethephone mixed in. I will be rating this trial over the next couple of weeks and getting the results out to everyone.

## WHEAT

With our current dry conditions I have been getting a lot of mixed messages and uncertainty about planting wheat this year. Some folks will be dry planting while others are going to hold out for a rain. Still others are not planting any wheat at all. A small amount was sown just prior to or after the rains in early September. This wheat looks decent right now but since then our top soil has dried back out. Moth numbers have been increasing in my traps for the past 3 weeks and now very small bollworm and fall armyworm larva can be found in the field. There is nothing wrong with dry planting wheat and waiting for a good rain to get it going, just make sure your fields are completely free of any green vegetation for 10-14 days to starve out any worms that might be out there right now.

As we get closer to time to plant wheat the annual "Picks List" of top performing varieties for our area is out. You can find this publication here <http://counties.agrilife.org/glasscock/files/2020/10/2020-2021-Picks-List.pdf> I have got one wheat variety trial already planned for this fall but should have enough seed for a 2nd test. We are looking at somewhere around 8 varieties. Give me a call if you would like to put one in.



## CHANGES TO Bt

I mentioned a couple of weeks back about the EPA Submitting a plan to change the regulations on the insect resistance management in Bt crops grown throughout the cotton belt, well they submitted their plan. What the plan boils down to is that all single gene Bt corn will be phased out within 3 years and all stacked gene corn and cotton that does not contain the Vip3a gene will be phased out in 5 years. This would remove all Bollgard II, TwinLink, and Widestrike cotton varieties, although I do not know how many will be available on the market in 5 years anyway. It would also cut corn technology options from the current 34 down to 8. The proposal is still open for comment and a more complete discussion by Dr. Pat Porter can be found here [https://focusonagriculture.blogspot.com/2020/09/tighter-regulations-around-bt-corn-are.html?utm\\_source=feedburner&utm\\_medium=email&utm\\_campaign=Feed%3A+FocusOnSouthPlainsAgriculture+%28FOCUS+on+South+Plains+Agriculture%29](https://focusonagriculture.blogspot.com/2020/09/tighter-regulations-around-bt-corn-are.html?utm_source=feedburner&utm_medium=email&utm_campaign=Feed%3A+FocusOnSouthPlainsAgriculture+%28FOCUS+on+South+Plains+Agriculture%29) With all of this in the works and the growing popularity in corn I am very interested in putting out some variety trials, give me a call if you would like to have one.

## PARAQUAT TRAINING

I continue to get questions about the website for the required paraquat training that most every one must take. Remember, this training is required for anyone who mixes, loads or applies paraquat and they must be a certified applicator. You can find the training at the eXtension website at <https://campus.extension.org/login/index.php>.

Give me a call if you have any questions.



# UNWANTED AGRICULTURAL SURPLUS PESTICIDES?

**DISPOSE OF THEM PROPERLY AND STAY IN YOUR VEHICLE**

**South Plains Fairgrounds • 105 E. Broadway • Lubbock, TX 79403**

## ACCEPTED ITEMS INCLUDE:

- Outdated, discontinued or unwanted agricultural pesticides
- Insecticides
- Herbicides
- Fungicides
- Rodenticides
- Nematicides
- Growth Regulators
- Empty, Triple-Rinsed Plastic Pesticide Containers
- Empty or Partial Metal Drums

***PESTICIDES MUST BE KEPT IN ORIGINAL CONTAINERS, EVEN IF THE LABEL IS NOT PRESENT.***

***Unknown pesticides will be sampled and identified on site.***

## MATERIALS NOT ACCEPTED:

- Explosive ordinances and ammunition
- Petroleum-Based Products
- Paints
- Medical Wastes
- Radioactive Substances
- Household Pesticides, Chemicals, and Waste
- Tires
- Fertilizers, Propane or Butane Cylinders
- Chlorinated Hydrocarbons
- Fumigant Canisters
- Used motor oil and other automobile fluids
- Auto Batteries
- Empty Totes
- Methyl-Bromide Cylinders
- Dioxins (2,4-5T, Silvex, TCDD, etc.)



**TEXAS A&M  
AGRI LIFE  
EXTENSION**



The members of Texas A&M AgriLife will provide equal opportunities in programs and activities, education, and employment to all persons regardless of race, color, sex, religion, national origin, age, disability, genetic information, veteran status, sexual orientation or gender identity and will strive to achieve full and equal employment opportunity throughout Texas A&M AgriLife. The Texas A&M University System, U.S. Department of Agriculture, and the County Commissioners Courts of Texas Cooperating

**For questions or additional information contact the Lubbock County Office at (806) 775-1740, Danny Nusser, Regional Program Leader at (806) 376-0051, or the Texas Department of Agriculture at (806) 799-8555.**