

CROP MANAGEMENT REPORT

May 31, 2016

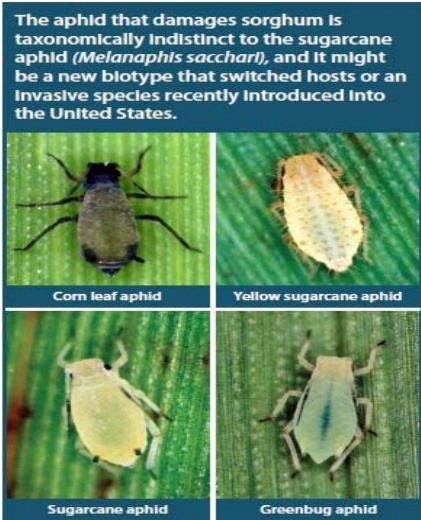
Volume 3, Issue 3

GENERAL SITUATION

Growing conditions have been very mixed over the past month, warm temperatures, cold temperatures, warm again. Dry, wet, windy, a little hail, you name it, we have probably seen it. A lot of seed has been put in the ground up to this point, but I am hard pressed to find too many fields where I can say we have had great emergence and a great stand. From Garden City to around FM 1357 and south into Reagan County soil moisture is pretty good. As you move west to Midkiff it increasingly gets dryer.

COTTON

Cotton stands are struggling right now, for many much of the early planted cotton went in and then the soil really cooled off. Around 5-19 and 5-20 soil temps were in the upper 50's and lower 60's. Combine this with rains on top to pack the seed in and some of these fields took as long as 10-14 days to emerge, others have yet to make a stand. I have included a data set on yield reduction related to days until emergence. Optimum emergence is five days with a soil temp at 8 inches of at least 68 degrees and a favorable five day forecast. Obviously we do not always get a favorable 5 day forecast and we cannot trust the weatherman to be accurate all the time, but the main thing we want to avoid is planting in front of a cold front moving in. Slow growing, delayed emerging seedlings open the door for seedling disease especially in very wet soils like we have now. They also expose the plants to the possibility of thrips damage which we rarely worry about. Bottom line, do not worry so much about the date and pay closer attention to soil temperatures.



The aphid that damages sorghum is taxonomically indistinct to the sugarcane aphid (*Melanaphis sacchari*), and it might be a new biotype that switched hosts or an invasive species recently introduced into the United States.

Corn leaf aphid

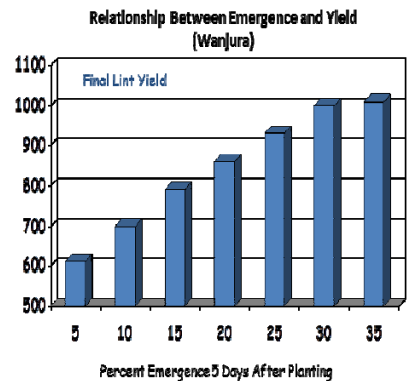
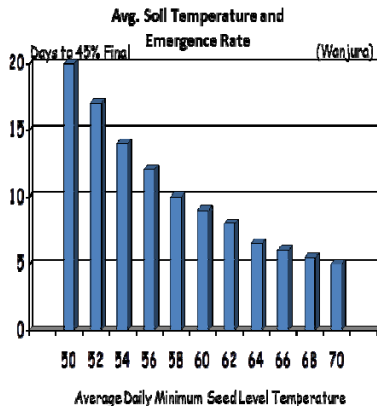
Yellow sugarcane aphid

Sugarcane aphid

Greenbug aphid

If you would like to be added to our newsletter mailing list please email tara.johnson@ag.tamu.edu THANK YOU

ST. LAWRENCE PEST MANAGEMENT
BRAD EASTERLING
EA-IPM
GLASSCOCK, REAGAN, UPTON COUNTIES
PO Box 299
GARDEN CITY, TX 79739
432-354-2381 (o)
940-256-1524 (M)



CORN/SORGHUM

Corn is making very good progress right now. Despite a couple of very hot days, temperatures have moderated a bit. Many fields will be tasseling in 2-3 weeks, hopefully the temperatures will cooperate. Keep fertilizer going. Most fields have really good moisture.

Sorghum is a little different. Soils were a little cooler when a lot of sorghum was planted. Much of it is just now starting to come around and take off. It has been yellow for a while from iron chlorosis and cool soils. Worms, mostly fall army worm (FAW) are in nearly every whorl. Do not worry about them unless they get all the way down to the growing point. I have not seen any sugarcane aphids (SCA) yet, but would definitely keep my eyes peeled for them.

The information given herein is for educational purposes only. Reference to commercial products or trade names is made with the understanding that no discrimination is intended and no endorsement by the AgriLife Extension Service is implied.

Extension programs serve people of all ages regardless of socioeconomic level, race, color, sex, religion, disability, or national origin. The Texas A&M University

System, US Department of Agriculture, and the County Commissioners Courts of Texas Cooperating

WHEAT

A lot of wheat is being cut right now and what few reports I have received confirm what I have seen in the field. This has been a great wheat year. I have heard dryland yields over 40 bu and irrigated (limited) over 50 bu pretty good for this part of the state.

SCOUTS

Cotton scouts are going through scout school this week and will be calling producers and getting in the field the week of June 6th. If you start getting calls from a number you do not recognize that is a (432) or (325) please answer it and work with them.

TURNROW MEETINGS

Tuesday, June 14	9:00 a.m. Glasscock Coop
Wednesday, June 15	9:00 a.m. Midkiff Coop
Tuesday, June 21	9:00 a.m. Glasscock Coop
Wednesday, June 22	9:00 a.m. Midkiff Coop