

# CROP MANAGEMENT REPORT

# TEXAS A&M AGRI LIFE EXTENSION

July 25, 2014

Volume 1, Issue 7

## GENERAL SITUATION

### INSIDE THIS ISSUE:

|                        |   |
|------------------------|---|
| GENERAL                | 1 |
| SUGARCANE APHID        | 1 |
| SCOUTING PROGRAM       | 2 |
| FLEAHOPPER             | 2 |
| STINK BUGS             | 2 |
| TURNROW MEETINGS       | 2 |
| HEAT UNITS             | 3 |
| WEATHER DATA           | 3 |
| STATEWIDE WHEAT SURVEY | 3 |

### ST. LAWRENCE PEST MANAGEMENT

BRAD EASTERLING

EA-IPM

GLASSCOCK, REAGAN, UPTON COUNTIES

PO Box 299

GARDEN CITY, TX 79739

432-354-2381 (o)

940-256-1524 (M)

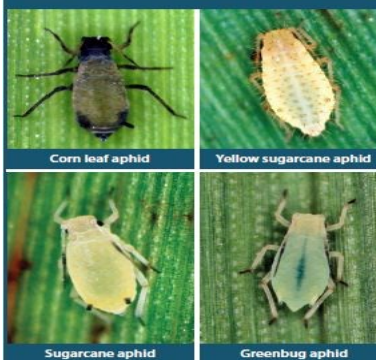


Overall it is still hot and dry. Insect activity has remained very low all summer with just a few hotspots of thrips or fleahoppers. Where the water is there cotton is progressing quite well. Some of it has been blooming for three weeks or more with a couple more weeks before cutout. The shorter water started blooming NAWF = 7-8, and unfortunately the hot weather could not have come at a worse time. Hopefully we will get some of the rain that is in the forecast. Most of the dryland has not started blooming, but when it does it will be a NAWF = 5-6. Fortunately with the cool cloudy days and then the high temperatures, I have not really seen much fruit shed, so the plants are doing a good job at retaining the squares and boles. In some cases maybe too many.

## SUGARCANE APHID

I touched a little on sugarcane aphid (SCA) in the past newsletters. I sent an email out earlier in the week. Rick Minzenmayer has confirmed SCA in a maize field in Ballinger. This is the first time they have been reported west of I-35. SCA reproduces very quickly, much like greenbugs, feed on the leaves and heads and exude large amounts of honeydew. They have been battling this pest in the Rio Grand Valley and along the coast the past two years and in Louisiana since '99. The success of controlling this pest has been mixed, and more importantly, is it worth it? In some instances good control has been achieved, but they have had to make three applications. \$45-\$55/ac for 4000-5000 lb maize in some instances does not sound to promising. I do know that they are getting the best control with Transform at the 1.0 oz rate. You can only make two applications per year and it has a 14 day pre-harvest interval. If SCA shows up on some of the seedling maize you might try Lorsban (1 qt) and save the Transform for later if you need it. The main thing is to give me a call if you suddenly have a flush of aphids in maize and we will figure something out. Hopefully we will not see any and we will harvest a good maize crop. More info on SCA can be found at <http://agrilife.org/stxborderinsects/sugarcane-aphids/>

The aphid that damages sorghum is taxonomically indistinct to the sugarcane aphid (*Melanaphis sacchari*), and it might be a new biotype that switched hosts or an invasive species recently introduced into the United States.



**CONCHUELA STINK****GREEN STINK BUG**

The information given herein is for educational purposes only. Reference to commercial products or trade names is made with the understanding that no discrimination is intended and no endorsement by the AgriLife Extension Service is implied.

Extension programs serve people of all ages regardless of socioeconomic level, race, color, sex, religion, disability, or national origin. The Texas A&M University System, US Department of Agriculture, and the County Commissioners Courts of Texas Cooperating

## SCOUTING PROGRAM

Unfortunately, as the scouting program has finally started rolling and they seem to have located most everyone's fields, this coming week 7/28-8/1 will be the last week our scouts are checking. After this they start football or go off to school. I appreciate everyone's patience this year and apologize for the problems we had. I take full responsibility for the lack of communication and will work to see to it that we have a better program next year. Thank you to those of you who brought the problems to my attention.

## FLEAHOPPERS

Over the past couple of weeks fleahoppers numbers have started rising in cotton. This is most likely due to the weeds starting to dry down. I have noticed that over the past 3-4 days they seem to have fallen a bit. I would keep an eye on them especially in later planted cotton that has not yet started to bloom. I know of several producers who threw a little Bidrin or Centric in when making a weed application.

## STINK BUGS

Stink bugs are present in very low numbers around the area. I am primarily seeing greenbugs in maize at this time. I have not seen numbers high enough to treat, but my concern is that they will build in the maize and then move to the cotton later. I have noticed a little feeding damage on some very early planted cotton.

## TURNROW MEETINGS

|                     |                          |
|---------------------|--------------------------|
| Tuesday, July 29    | 9:00 a.m. Glasscock Coop |
| Wednesday, July 30  | 9:00 a.m. Midkiff Coop   |
| Tuesday August 5    | 9:00 a.m. Glasscock Coop |
| Wednesday, August 6 | 9:00 a.m. Midkiff Coop   |

**SUGARCANE APHID**



Sugarcane aphids on maize leaf

### HEAT UNITS

| DATE       | 5/10   | 5/20   | 6/1    | 6/10  |
|------------|--------|--------|--------|-------|
| 2014       | 1341.5 | 1230.5 | 1063.5 | 878.5 |
| 2013       | 1406.5 | 1264.5 | 1057   | 882.5 |
| 5 Year AVG | 1622   | 1401.5 | 1190   | 1000  |

Heat unit accumulations over the past seven days have equaled 21.5 DD 60's per day. We are about on track with the long term average when you take out 2011 which has thrown the short term averages out of whack.

### WEATHER DATA

|                 | May 10     | May 20     | June 1     | June 10    |
|-----------------|------------|------------|------------|------------|
| Daily ET        | .30 in/day | .30 in/day | .23 in/day | .08 in/day |
| Previous 7 day  | 2.12 in    | 2.12 in    | 1.61 in    | 0.55 in    |
| Total water use | 7.42 in    | 6.77 in    | 4.65 in    | 2.78 in    |

## STATEWIDE WHEAT SURVEY

Average daily, weekly and total water use for 4 different planting dates based on total plant evapotranspiration.

The Texas A&M AgriLife Extension Service, Texas A&M AgriLife Research, the Texas Wheat Producers Board, Texas Foundation Seed Service and Texas Seed Trade Association are conducting a state wide survey to identify the seed characteristics and wheat management issues that are most important to wheat producers across the state. They are asking that everyone involved in the production of wheat please go to the following website and complete the short survey in order to let the plant breeders, agronomist, pathologist, entomologist, etc... know what your primary concerns are in the area of wheat production.

Link to survey: [https://agrilife.az1.qualtrics.com/SE/?SID=SV\\_2i1YPSScf3aptHv](https://agrilife.az1.qualtrics.com/SE/?SID=SV_2i1YPSScf3aptHv)

## COUNTY COMMITTEE ELECTIONS 2014

|                     |  |
|---------------------|--|
| <b>Aug. 1, 2014</b> | Last day to file nomination forms at the local USDA Service Center |
| <b>Nov. 3, 2014</b> | Ballots mailed to eligible voters                                  |
| <b>Dec. 1, 2014</b> | Last day to turn in voted ballots at the USDA Service Center       |
| <b>Jan. 1, 2015</b> | Newly elected county committee members take office                 |