

CROP MANAGEMENT REPORT

TEXAS A&M
AGRI LIFE
EXTENSION

May, 2014

Volume 1, Issue 3

INSIDE THIS ISSUE:

General	1
Cotton	1
Scouting Program	1
Corn/Sorghum	2
Turnrow Meetings	2
West TX Livestock & Range Conf.	2

ST. LAWRENCE PEST MANAGEMENT
BRAD EASTERLING
EA-IPM

GLASSCOCK, REAGAN, UPTON COUNTIES
PO Box 299
GARDEN CITY, TX 79739
432-354-2381 (o)
940-356-1524 (m)



GENERAL SITUATION

Planting of irrigated cotton has made good progress over the past 10-14 days. Now with a significant chance for rain over the Memorial Day weekend many producers have moved over to their dry-land ground. They are hoping that this will be the planting rain they have been waiting for and it will get this crop up and going. Hopefully they are right and we do not pack it in.

Cotton

So far aside from the lack of moisture this planting season has not been too bad. I know that there are many producers who have struggled to push water to the top of beds and keep it there. I have looked at several fields that were planted last week when the nights dropped into the 30's and 40's and they have emerged in 7-9 days. That is pretty good for that cool of nighttime temperatures. We started out with soil temperatures around 74° and cooled off to about 63° by the time the cold snap ended. That is about as cool as you would want the soil at planting but it does not seem to have effected emergence. We are currently running right around 73-74° from 2-8 in. deep. With the result demonstrations and cotton scout interviews over the past couple of weeks I have not had time to look at much cotton, but so far have not seen any fields beyond emergence. I know we have some pima out towards St. Lawrence that was planted in April that I still have not had a chance to stop and look at. I have currently put 4 trials in with about 4 more planned. We still have seed for more if we need or have locations for more trials.

Scouting Program

I have finished interviewing cotton scouts and the St. Lawrence Cotton Growers are currently assisting me in selecting the scouts that will work the program this season. We will be attending Scout School on June 3rd in San Angelo and then they will start locating their fields after that. All of this season's scouts are first year scouts so please assist them in locating your fields and let me know if you have any problems.

**West TX Livestock &
Range Conf.**

**8:30-4 p.m., May 29th,
Broughton AG Complex,**

Big Spring

For more info call Rebel,

432-354-2381

The information given herein is for educational purposes only. Reference to commercial products or trade names is made with the understanding that no discrimination is intended and no endorsement by the AgriLife Extension Service is implied.

Extension programs serve people of all ages regardless of socioeconomic level, race, color, sex, religion, disability, or national origin. The Texas A&M University

System, US Department of Agriculture, and the County Commissioners Courts of Texas Cooperating



Won't be long

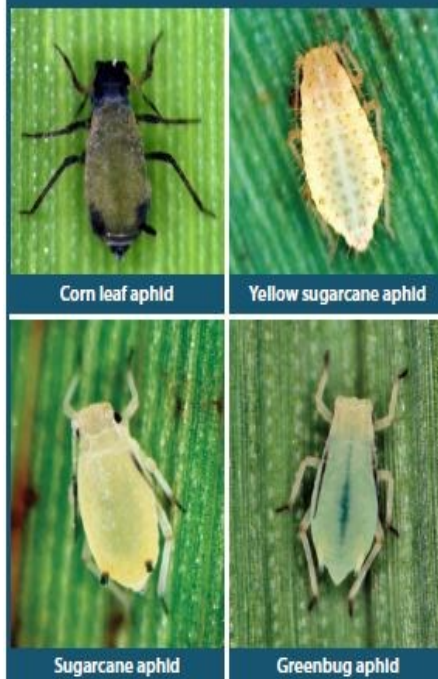
Corn/Sorghum

Corn and sorghum are both coming along just fine. The corn has been hit by a freeze or two in some instances but in all fields that I have looked at, it will survive and grow out of the damage. Sorghum is just coming up in many fields but looks good and a rain will really help.

We potentially have a new pest for sorghum to be on the lookout for this year, Sugarcane aphid. This is a different pest than the Yellow Sugarcane aphid. Fortunately it has not been seen feeding on sorghum west of I-35. In 2013 it was very prolific from Mexico north through the Blacklands and east through Louisiana and Mississippi. They produce a very large amount of honeydew, reduced seed set, and can kill seedlings. They will also feed and reproduce on Johnson grass. Acceptable control has been found with Dimethoate. Lorsban and pyrethroids required multiple treatments. A section 18 has been received for Transform WG on Sugarcane aphid.

I do not feel that this pest is an eminent threat to our sorghum crop, but we should be aware. If you notice any new or strange looking aphids please give me a call.

The aphid that damages sorghum is taxonomically indistinct to the sugarcane aphid (*Melanaphis sacchari*), and it might be a new biotype that switched hosts or an invasive species recently introduced into the United States.



TURNROW MEETINGS

Tuesday, June, 24	9:00 a.m. Glasscock Coop
Wednesday, June 25	9:00 a.m. Midkiff Coop
Tuesday July, 1	9:00 a.m. Glasscock Coop
Wednesday, July 2	9:00 a.m. Midkiff Coop