

# CROP MANAGEMENT REPORT

January, 2015

Volume 2, Number 1

## UPCOMING EVENTS:

Result Demonstration Review	1/15
Permian Basin Cotton Conf.-Stanton	1/20
Sorghum Meeting	3/5

## GENERAL SITUATION

Finally a little moisture has come our way in the form of ice again this year. It appears that we have received somewhere in the neighborhood of around .6 inch of moisture from the ice. Not a bad start considering that we did not have .6" through April last year. Of course the fall was much wetter. Officially we finished 2014 with a total of 8.37" of rain. That leaves us the driest of all weather stations reporting on the West Texas Mesonet. That is one title you do not want to have. But 2015 is another year and we are already planning on bigger and better things. Despite changes in the farm bill, low commodity prices and dry conditions we will get through this.

## COTTON

Cotton harvest has been finished up for some time now and ginning is nearly complete. Ginning may be finished by the time you receive this. All in all the crop was decent this year. The dryland was pretty good in some places and in others not so good. Most of the irrigated acres were down simply do to the lack of rain. However this has resulted in more bales being harvested than we have had in a while. Unfortunately, there was not a price for the cotton after harvesting it.

## RESULT DEMONSTRATION REVIEW

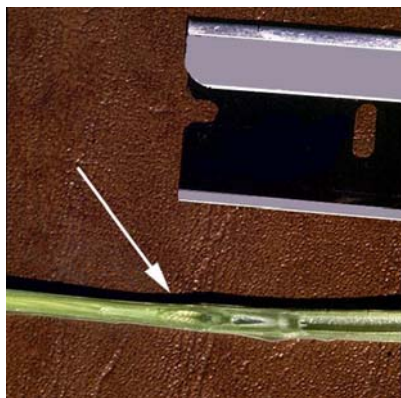
I will be holding the annual Result Demonstration Review Tuesday, January 13, 2015 at 7:00 at the Glasscock Co. Coop. We will be reviewing all of the trials conducted throughout the area in 2014.

## PERMIAN BASIN COTTON CONF.

The Permian Basin Cotton Conf. will be held Tuesday, Jan. 20, 2015, at 8:00 am at the Martin Co. Community Center. Speakers will be on hand to discuss Farm Bill, Variety Trial, New Varieties, Weed Resistance, New Technologies, and Cotton Market Outlook. CEU's will be provided. Cotton Glasscock Extension office for more information.

ST. LAWRENCE PEST MANAGEMENT  
BRAD EASTERLING  
EA-IPM  
GLASSCOCK, REAGAN, UPTON COUNTIES  
PO Box 299  
GARDEN CITY, TX 79739  
432-354-2381 (o)  
940-356-1524 (m)





The information given herein is for educational purposes only. Reference to commercial products or trade names is made with the understanding that no discrimination is intended and no endorsement by the AgriLife Extension Service is implied.

Extension programs serve people of all ages regardless of socioeconomic level, race, color, sex, religion, disability, or national origin. The Texas A&M University

System, US Department of Agriculture, and the County Commissioners Courts of Texas Cooperating

## WHEAT

With the recent moisture wheat now has somewhat of a chance of making a crop with some more rain later on this spring. Later on this month or early next month will be time to start thinking about topdressing this crop if you want to try and maximize any potential profit and if it still looks like the yield potential is there. My general recommendation would be to apply 1.2 units of N for every bushel that you expect to harvest. So say your goal is 25 bu,  $1.2 \times 25 = 30$  units N /ac. If it is dryland, which most of our wheat is, and you are putting out dry fertilizer such as urea, then timing will be the biggest factor. It is better to put it out plenty early but right before a rain and get it watered in then to wait to long and put it out after they crop begins to joint. Jointing in wheat is like pin-head square in cotton. You have to have your fertilizer out by the time the crop begins to joint. Just like with cotton, you can still put the fertilizer out up until heading, but you will not see as great of a benefit as you will if you put it out earlier. I will be splitting stems around the county as well as at our variety trial at Kellermeier's to keep folks up to data on first hollow stem.

As far as weed control is concerned, 2,4-D, MCPA, and dicamba products are able to control most all broadleaves out in the field fairly economically. For grass weeds, products such as Finesse Grass and Broadleaf and Hoelon do a decent job. The biggest issue in general is having enough soil moisture for the weeds to take up the herbicide. Right now would be a good time if the weeds are present.